

Asymmetric Zip Blazer

Product Specification Coversheet

Style #:	73277	Last Updated:	Feb 28 2017		
Style Name:	Asymmetric Zip Blazer	Origin Date:	Feb 2 2017		
Description:	Dress Blazer	Developer:	Maia Loesche		
Category:	Women's Blazers	PLM:	Dr. Morris		
Size Range:	XS - XL	Fit Block:	Women's Jacket		
Season:	2015	Status:	Reorder		
Year:	2016				
Vendor:	Example				
Country of Origin:	Vietnam				

Status of Garment

	Author	Proto Number	Date Evaluated	Status	Instructions to Vendor
Approval Proto					
Approval 2nd Sample					
Approval 3					
Salesman Sample					
Size Run					
Pre-Production					
TOP Samples					

Status of Trims

	Author	Trim Number	Date Evaluated	Status	Instructions to Vendor

How to Proceed

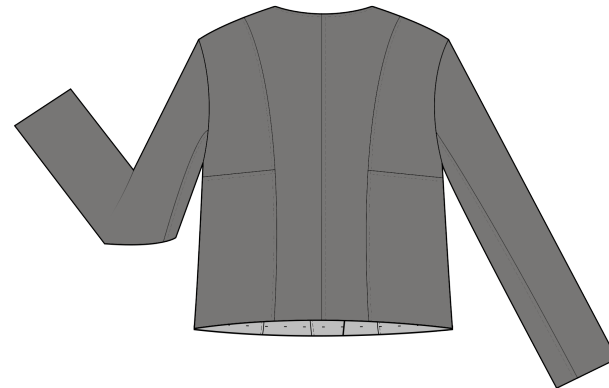
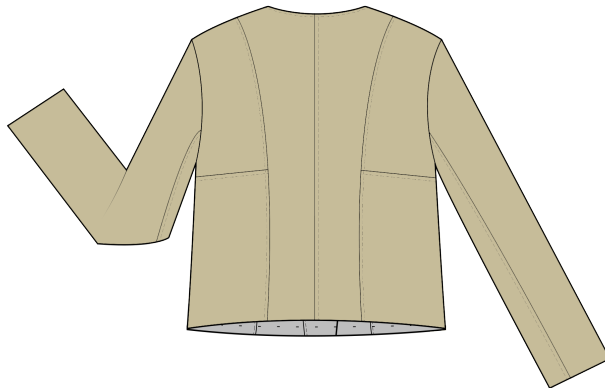
1	
2	
3	

Asymmetric Zip Blazer

Colorups

Date Created
Feb 2 2017

Style #:	73277
Style Name:	Asymmetric Zip Blazer
Description:	Dress Blazer
Category:	Women's Blazers
Size Range:	XS - XL
Season:	2015
Year:	2016
Vendor:	Example
Country of Origin:	Vietnam



Revision Date	Revisions

Asymmetric Zip Blazer

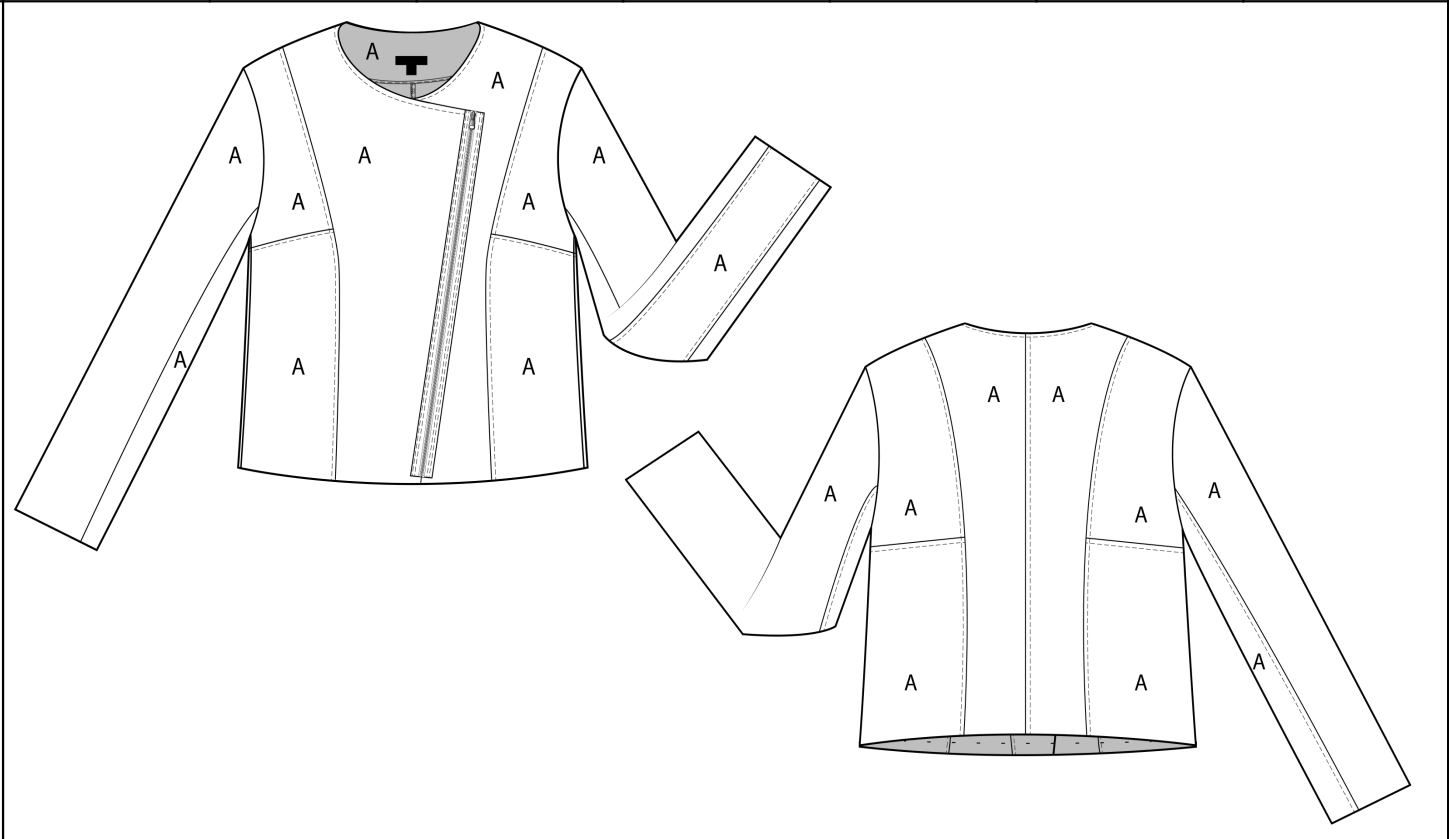
Style Specs

Kristen Morris

Date Created
Feb 2 2017

Style #:	73277	Color Layout	A	B	C	D	E	F
Style Name:	Asymmetric Zip Blazer	Style Number	Blazer body, panels	Sleeve, sleeve panels	Facing	Topstitching	Zipper tape	Binding tape
Description:	Dress Blazer	Color Code						
Category:	Women's Blazers							
Size Range:	XS - XL	Tan	Tan	Tan	Tan	DTM	DTM	Taupe
Season:	2015	Charcoal	Charcoal	Charcoal	Charcoal	DTM	DTM	Dark Charcoal
Year:	2016							
Vendor:	Example							
Country of Origin:	Vietnam							

Notes:



Asymmetric Zip Blazer

Style Specs

Fabric For		Fabric	Trim For	Trim
A: Blazer body, side panels, sleeves, sleeve panels, neckline facing		Item # 23563 78% Polyester 18% Rayon 4% Spandex 315 g/m2 Piece dyed	Front zipper	YKK #6, closed end, M5Q slider Metal teeth Golden brass Woven tape DTM
			Shoulder pad	Shoulder Pads USA 1/4" thick 2 1/2 x 6" poly tricot
			Binding: for facing	Item # 1125 100% polyester 114 g/m2 undyed
			Interfacing: for facing	Item # 7231 100% polyester 40 g/m2 Piece dyed
Labels/Hangtags/Etc.		Labels/Hangtags/Etc. Placement		Care on Label
Brand (inside) label	Inside CB neck	1" up from bound edge of facing		Wash inside out. Machine wash cold with like colors. Gentle cycle. Only non-chlorine bleach when needed. Tumble dry low. Remove promptly. Cool iron if needed.
Country of Origin label	Inside CB neck	Sewn to Brand label at center of label		
Fiber / Care Label	Wearers left side SS	3 3/4" up from finished edge hem (measured from middle of tag)		
Main hang tag	Wearers right cuff at underarm seam	3.25" from finished cuff hem		
Sub hang tag	Wearers right cuff at underarm seam	3.25" from finished cuff hem		
			Shrinkage Std	2% Width x 5% Length
			Carton Quantity	Please advise
			Carton Size	Please advise based on quantity
Content on Label			Packing Method	Placed on Hanger; Individually Pollybagged
Revision Date	Revisions			

Asymmetric Zip Blazer

Bill of Material & Costing

Style #:	73277
Style Name:	Asymmetric Zip Blazer
Description:	Dress Blazer
Category:	Women's Blazers
Size Range:	XS - XL
Season:	2015
Year:	2016
Vendor:	Example
Country of Origin:	Vietnam

COLOR KEY	
GREEN = XXX Company PROD DEV info	
YELLOW = Factory info	

1st proto cost	XXX
2nd cost	
final cost	
REV DATE	

DESIGNER	
ASSISTANT DESIGNER	
TECH DESIGN	

FABRICS (ROLL GOODS)											
ITEM #	DESCRIPTION	VENDOR	USE	WIDTH/ SIZE	MARKER USAGE	%ALLOW, SZ & WST	USAGE, YARDS	COST STATUS	COST \$/YARD	CIF	EXTEN.
Item # 23563	78% Polyester 18% Rayon 4% Spandex	TBD	A: Blazer body, side panels, sleeves ,sleeve panels, neckline facing	52"	1.086	8%	1.173	FOB	\$4.38		\$5.14
										TOTAL	\$5.14

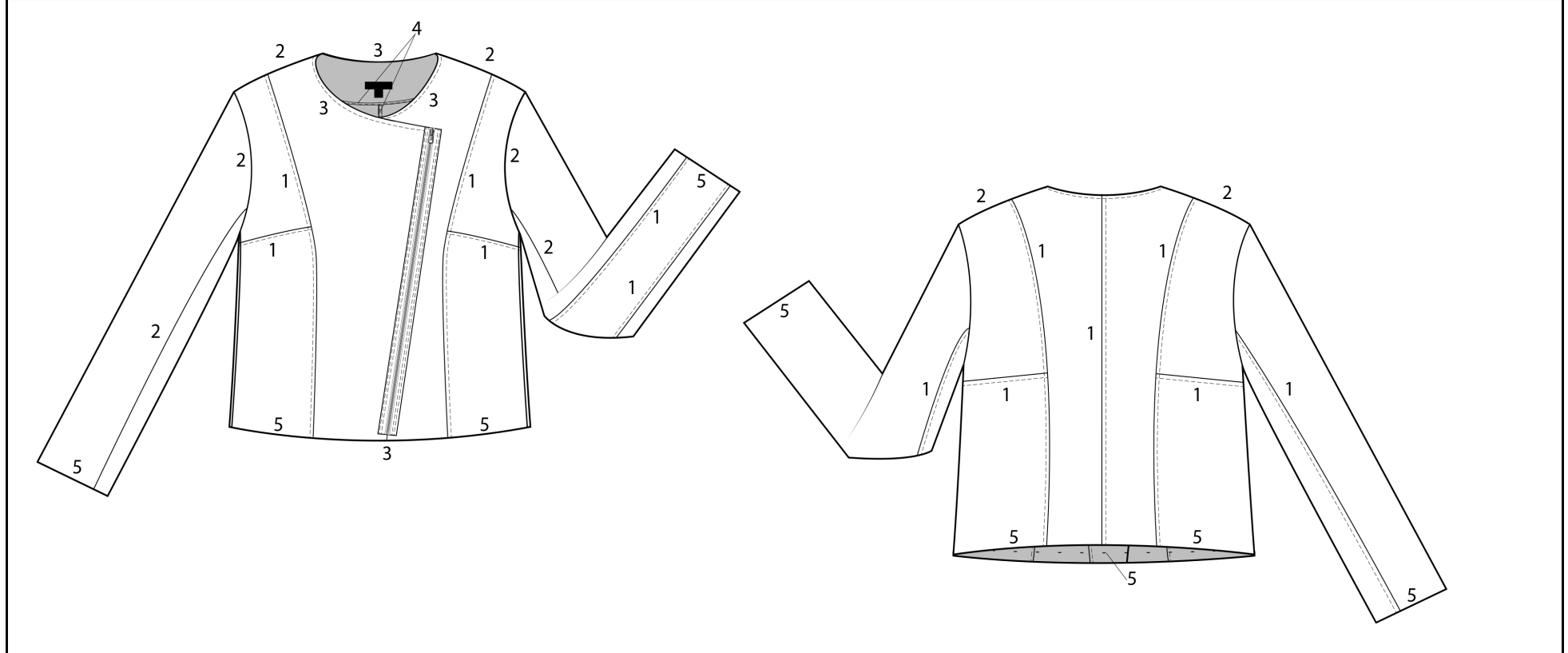
TRIMS											
DESCRIPTION	VENDOR	USE / LOCATION	SIZE	QTY	%ALLOW	QTY	STATUS	\$/ITEM			
Front Zpper	YKK	Center front zipper	#6	1.00	5.00%	1.05		\$1.29			\$1.35
Shoulder pads	Shoulder Pads USA	Shoulders	2.5x6"	2.00	5.00%	2.10		\$1.13			\$2.37
Binding	Wilson Garment Accessories	Binding on facing	3/4"	1.00	5.00%	1.05		\$0.75			\$0.79
Interfacing	TBD	interfacing along facing	50"	1.00	5.00%	1.05		\$0.35			\$0.37
Packaging (carton/swift tag/carton OPP tape/safety pin/plastic clip/tissue paper/ misc.)											\$0.50
TOTAL TRIMS											\$5.38

COMMENTS			TOTAL MATERIALS	
1st proto cost	2nd cost	final cost		\$10.52
11/02/12 : initial costing base on 1st protos, not a finalized			CHARGES, FABRICS	
			CHARGES, TRIMS	
			SPECIAL TREATMENT	
			\$ CMT	\$/MIN:
			PROFIT & OH @	
			QUOTA CHARGE	
			F O B	XXX

Asymmetric Zip Blazer

Seams

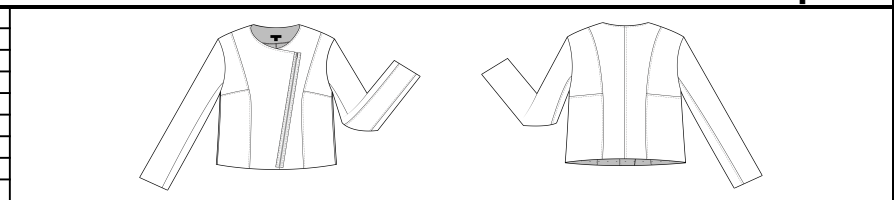
Style #:	73277	Stitch key #	Seam Type	Seam Name	ISO 4916 #	Seam Allowance in Inches	S.P.I.	Thread Type	Placement/ Special Instructions	Construction Notes
Style Name:	Asymmetric Zip Blazer	#1	LSq	Seam and Cord Seam	2.02.03	1/4"	10	TBD	Front and back princess seams, CB seam, yoke seams	Serge finish before topstitching
Description:	Dress Blazer	#2	Ssa	General Seaming	1.01	1/4"	10	TBD	Shoulder seams, armhole seams, side seams	serge after sewing
Category:	Women's Blazers	#3	Sse	Runstitch and Topstitch	1.06.02	1/4"	10	TBD	Lapel edge and back neckline	
Size Range:	XS - XL	#4	BSc	Binding - Clean Finish	3.05.01	1/8"	10		Back neck facing edge finish, CB seam	Sew before topstitching CB seam to the garment body
Season:	2015	#5	Efl	Blindstitch Hem	-	1 1/2"	8	TBD	Cuff hem, front and back bottom hem	serge before blind hem
Year:	2016									
Vendor:	Example									
Country of Origin:	Vietnam									



Asymmetric Zip Blazer

Graded Specs

Style #:	73277	Spec Date	
Style Name:	Asymmetric Zip Blazer		
Description:	Dress Blazer		
Category:	Women's Blazers		
Size Range:	XS - XL		
Season:	2015		
Year:	2016		
Vendor:	Example		
Country of Origin:	Vietnam		



Code	Point of Measure	TOL. +/-	S	M	L	XL	2XL	3XL	4XL	Grade S	Grade M	Grade L	Grade XL	Grade 2XL	Grade 3XL	Grade 4XL
1	Front length	1/2			18 1/2"							18 1/2"				
2	Side length	1/4			11"							11"				
3	Across shoulder	1/4			18"							18"				
4	Across chest (8" below HPS)	1/4			15"							15"				
5	Side front yoke depth from princess seam at shoulder)	1/4			10"							10"				
6	Chest circumference	1/2 - 3/4			38"							38"				
7	Zipper length	-			17 1/2"							17 1/2"				
8	Sleeve length underarm	3/8			17 1/4"							17 1/4"				
9	Curved armhole width circumference	1/2			20 1/4"							20 1/4"				
10	Muscle width circumference	1/4			12 1/2"							12 1/2"				
11	Elbow width circumference	1/4			12"							12"				
12	Sleeve opening width circumference	1/4			9 7/8"							9 7/8"				
13	Front side panel width (at bottom hem)	1/4			6"							6"				
14	Center back length	1/2			19 1/4"							19 1/4"				
15	Across back (8" below HPS)	1/4			15 3/4"							15 3/4"				
16	Sleeve length CB neck	3/8			33 3/4"							33 3/4"				
17	Side back yoke depth from princess seam at shoulder)	1/4			10"							10"				
18	Neck depth CF	1/8			4 1/4"							4 1/4"				
19	Neck depth CB	1/8			7/8"							7/8"				
20	Invisible hem (cuffs and bottom hem)	1/4			1 1/2"							1 1/2"				
21	Neckline facing width (at CB)	1/4			2 1/2"							2 1/2"				
22	Back center panel width (at bottom hem)	1/8			4 1/4"							4 1/4"				
23	Back side panel width (at bottom hem)	1/8			6 1/8"							6 1/8"				
24	Back sleeve panel width (at cuff hem)	1/8			3 1/8"							3 1/8"				
25																
26																
27																
28																
29																
30																

Revision Date	

Asymmetric Zip Blazer

Style #:	73277
Style Name:	Asymmetric Zip Blazer
Description:	Dress Blazer
Category:	Women's Blazers
Size Range:	XS - XL
Season:	2015
Year:	2016
Vendor:	Example
Country of Origin:	Vietnam

Code	Point of Measure
1	Front length
2	Side length
3	Across shoulder
4	Across chest (8" below HPS)
5	Side front yoke depth from princess seam at shoulder)
6	Chest circumference
7	Zipper length
8	Sleeve length underarm
9	Curved armhole width circumference
10	Muscle width circumference
11	Elbow width circumference
12	Sleeve opening width circumference
13	Front side panel width (at bottom hem)
14	Center back length
15	Across back (8" below HPS)
16	Sleeve length CB neck
17	Side back yoke depth from princess seam at s
18	Neck depth CF
19	Neck depth CB
20	Invisible hem (cuffs and bottom hem)
21	Neckline facing width (at CB)
22	Back center panel width (at bottom hem)
23	Back side panel width (at bottom hem)
24	Back sleeve panel width (at cuff hem)

Point of Measurement

