

Skinny Fit Jean

Product Specification Coversheet

Style #:	63D001R	Last Updated:	Feb 28 2017		
Style Name:	Skinny Fit	Origin Date:	Feb. 2 2017		
Description:	Women's skinny fit denim jean	Developer:	Maia Loesche		
Category:	Women's Denim	PLM:	Dr. Morris		
Size Range:	5, 7, 9, 13	Fit Block:	Women's Jean		
Season:	2015	Status:	Reorder		
Year:	2017				
Vendor:	Example				
Country of Origin:	China				

Status of Garment

	Author	Proto Number	Date Evaluated	Status	Instructions to Vendor
Approval Proto					
Approval 2nd Sample					
Approval 3					
Salesman Sample					
Size Run					
Pre-Production					
TOP Samples					

Status of Trims

	Author	Trim Number	Date Evaluated	Status	Instructions to Vendor

How to Proceed

1	
2	
3	

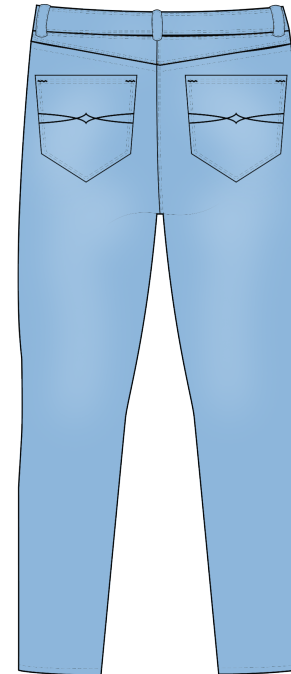
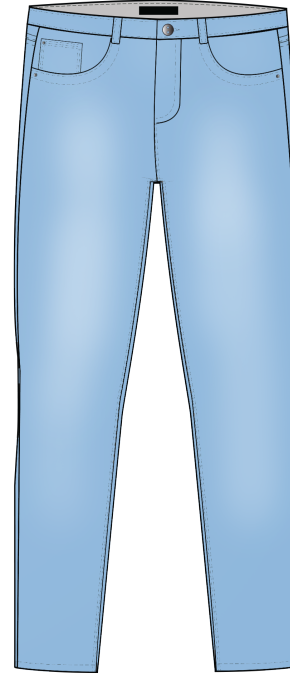
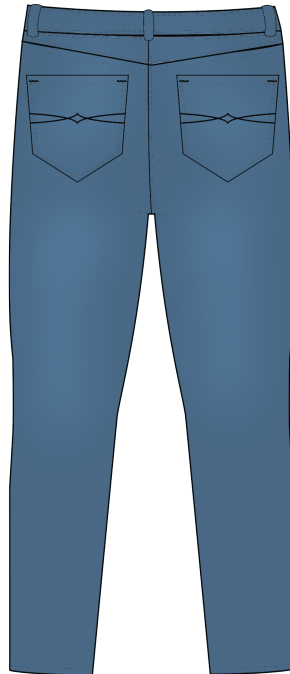
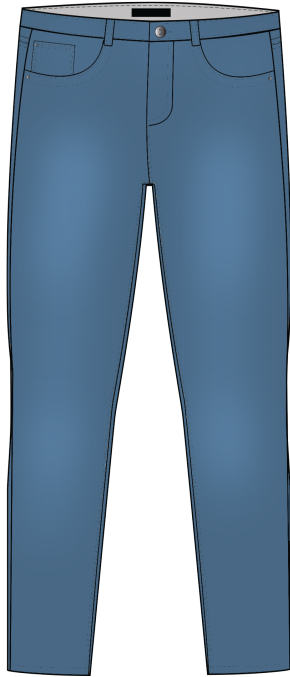
Skinny Fit Jean

Colorups

Date Created

Feb. 2 2017

Style #:	63D001R
Style Name:	Skinny Fit
Description:	Women's skinny fit denim jean
Category:	Women's Denim
Size Range:	5, 7, 9, 13
Season:	2015
Year:	2017
Vendor:	Example
Country of Origin:	China



Revision Date	Revisions

Skinny Fit Jean

Kristen Morris

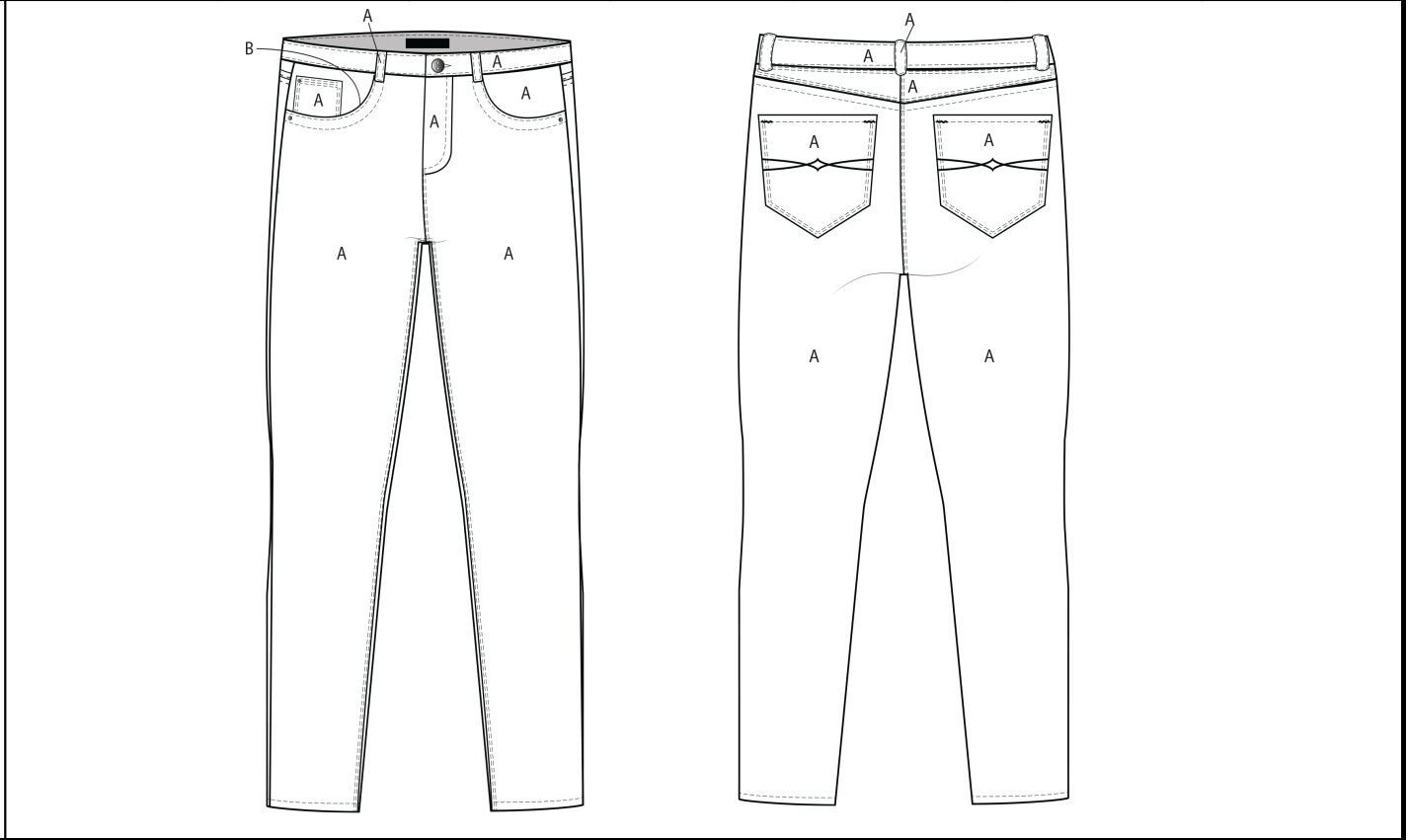
Style Specs

Date Created

Feb. 2 2017

Style #:	63D001R	Color Layout	A	B	C	D	E	F
Style Name:	Skinny Fit	Style Number	Front leg, back leg	Coin pocket, back pockets, belt loops	Waistband, back yoke, belt loops	Topstitching	Pocket bag lining	
Description:	Women's skinny fit denim jean	Color Code						
Category:	Women's Denim							
Size Range:	5, 7, 9, 13	Midnight (Dark Wash)	Midnight	Midnight	Midnight	Taupe	Black	
Season:	2015	Sky (Light Wash)	Sky	Sky	Sky	Taupe	Black	
Year:	2017							
Vendor:	Example							
Country of Origin:	China							

Notes:



Skinny Fit Jean

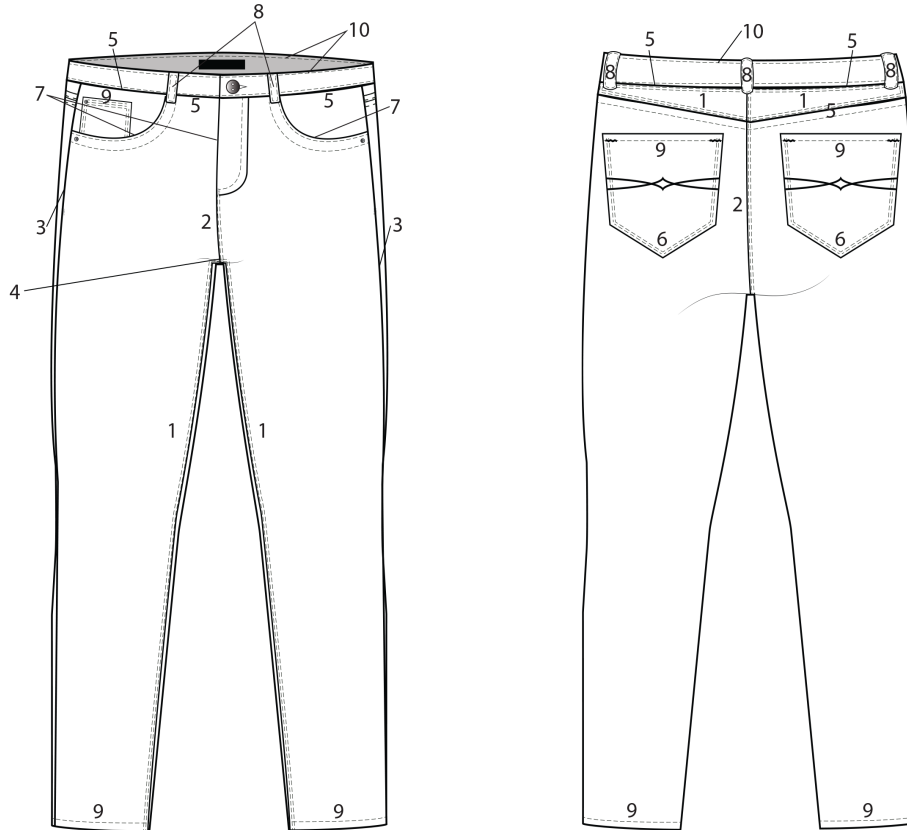
Style Specs

Fabric For	Fabric	Trim For	Trim
A: Pant legs, waistband, belt loops, coin pocket, back pockets, back yoke	Item # 717 58% cotton 26% polyester 14% rayon 2% Lycra spandex normal foam finish 12.5 OZ/yd2 piece dyed	Fly zipper	YKK #4 Closed end, M32 self lock cam Metal teeth 4YG Nickel brass Woven tape, dark navy
B: Pocket bag lining	Item # 6799 100% cotton Preshrunk 110 g/m2 piece dyed	Front fly button	YKK 30L (18mm) Metal Nickel brass
		Burr E: front pockets, coin pocket	YKK Size 15 (3/8") stlye E Metal Nickel brass
Labels/Hangtags/Etc.		Labels/Hangtags/Etc. Placement	
Brand (inside) label	Along inside waistband at CB	1/4" down from top edge of CB waistband	
Size label	Along inside waistband at CB	3/8" up from edge of CB waistband	
Care label	Inside bottom of waistband at CB	inserted at middle of CB wasitband (as measured from center of tag)	
ID tag	Inside bottom of waistband at CB	directly behind care label at CB waistband (as measured from center of tag)	
Main hang tag	wearers front right belt loop	2.75" from belt loop	
Sub hang tag	wearers front right belt loop	2.75" from belt loop	
		Shrinkage Std	2% Width x 5% Length
		Carton Quantity	Please advise
		Carton Size	Please advise based on quantity
Content on Label	58% Cotton 26% Polyester 14% Rayon 2% Lycra ® Spandex	Packing Method	Placed on Hanger; Individually Polybagged
Revision Date	Revisions		

Skinny Fit Jean

Seams

Style #:	63D001R	Stitch key #	Seam Type	Seam Name	ISO 4916 #	Seam Allowance in Inches	S.P.I.	Thread Type	Placement/ Special Instructions	Construction Notes
Style Name:	Skinny Fit	#1	LSq	Seam and Cord Seam	2.02.03	1/2"	12	TBA	Inseam, yoke panels	serge after sewing, double needle topstitch 1/2" apart
Description:	Women's skinny fit denim jean	#2	LSq	Seam and Cord Seam	2.02.03	3/4"	12	TBA	Front and back rise	serge after sewing, double needle topstitch 1/4" apart
Category:	Women's Denim	#3	Ssa	General Seaming	1.01	3/8"	12	TBA	Outseam	serge after sewing
Size Range:	5, 7, 9, 13	#4	Lsas	Crotch Seam on Jeans	-	3/4"	12	TBA	Intersection of inseam and front/back rise	Double needle topstitch
Season:	2015	#5	BSc	Waistbanding on Jeans	3.05.01		8	TBA	Waistband to jean body	Topstitch 1/8" from seam
Year:	2017	#6	LSd	Patch Pocket Setting	5.31.03	1/2"	8	TBA	Rear pockets	Double needle topstitch 3/8" apart
Vendor:	Example	#7	Sse	Runstitch and Topstitch	1.06.02	1/4"	8	TBA	Front hand pockets, fly opening	Front pockets: double needle topstitch 1/2" apart
Country of Origin:	China	#8	Efh	Belt Loops	-	1/8"	8	TBA	Belt loops	Topstitching 1/4" apart
		#9	Efb	Clean Finish Hem	6.03.01	1/2"	8	TBA	Top finish of coin pocket, top of back pockets, pant leg hem	Coin pocket: 3 needle topstitch, rows 1/8" apart
		#10	Osa	Deco Stitching	5.01.01	1/8"	8	TBA	Top of waistband	-



Skinny Fit Jean	
Style #:	63D001R
Style Name:	Skinny Fit
Description:	Women's skinny fit denim jean
Category:	Women's Denim
Size Range:	5, 7, 9, 13
Season:	2015
Year:	2017
Vendor:	Example
Country of Origin:	China
Code	Point of Measure
1	Waistband depth
2	Waistband width circumference
3	Hip width
4	Low hip width
5	Inseam
6	Outseam
7	Front rise
8	Back rise
9	Thigh width circumference
10	Knee width circumference
11	Leg opening circumference (at bottom hem)
12	Fly width
13	Fly length
14	Button placement over from finished edge
15	Button placement down from waistband edge
16	Belt loop width
17	Belt loop height
18	Hand pocket width
19	Hand pocket height (at SS from opening to waistband)
20	Coin pocket opening
21	Coin pocket height
22	Coin pocket width
23	Back yoke depth (at CB)
24	Back yoke depth (at SS)
25	Back pocket opening width
26	Back pocket bottom width
27	Back pocket placement over from CB (at top)
28	Back pocket placement over from CB (at bottom)
29	Back pocket placement over from SS (at top)
30	Back pocket placement over from SS (at bottom)
31	Back pocket placement down from yoke towards CB
32	Back pocket placement down from yoke towards SS

Point of Measurement

